

# Search

FILE 'CAPLUS, WPIX, USPATFULL, USPAT2' ENTERED AT 17:29:26 ON 07 JUN 2005

```

E ENDO A/AU
L10      146 SEA ABB=ON  PLU=ON  "ENDO A"/AU
L11      137 SEA ABB=ON  PLU=ON  "ENDO A"/AU
L12       0 SEA ABB=ON  PLU=ON  "ENDO A"/AU
L13       0 SEA ABB=ON  PLU=ON  "ENDO A"/AU
TOTAL FOR ALL FILES
L14      283 SEA ABB=ON  PLU=ON  "ENDO A"/AU
E ENDO AYAE/AU
L15       2 SEA ABB=ON  PLU=ON  "ENDO AYAE"/AU
L16       0 SEA ABB=ON  PLU=ON  "ENDO AYAE"/AU
L17       5 SEA ABB=ON  PLU=ON  "ENDO AYAE"/AU
L18       1 SEA ABB=ON  PLU=ON  "ENDO AYAE"/AU
TOTAL FOR ALL FILES
L19       8 SEA ABB=ON  PLU=ON  "ENDO AYAE"/AU
E SEKI S/AU
L20      223 SEA ABB=ON  PLU=ON  "SEKI S"/AU
L21      201 SEA ABB=ON  PLU=ON  "SEKI S"/AU
L22       0 SEA ABB=ON  PLU=ON  "SEKI S"/AU
L23       0 SEA ABB=ON  PLU=ON  "SEKI S"/AU
TOTAL FOR ALL FILES
L24      424 SEA ABB=ON  PLU=ON  "SEKI S"/AU
E SEKI SHUNICHI/AU
L25       61 SEA ABB=ON  PLU=ON  "SEKI SHUNICHI"/AU
L26       0 SEA ABB=ON  PLU=ON  "SEKI SHUNICHI"/AU
L27       46 SEA ABB=ON  PLU=ON  "SEKI SHUNICHI"/AU
L28      10 SEA ABB=ON  PLU=ON  "SEKI SHUNICHI"/AU
TOTAL FOR ALL FILES
L29      117 SEA ABB=ON  PLU=ON  "SEKI SHUNICHI"/AU
E MORII K/AU
L30       73 SEA ABB=ON  PLU=ON  "MORII K"/AU
L31       49 SEA ABB=ON  PLU=ON  "MORII K"/AU
L32       0 SEA ABB=ON  PLU=ON  "MORII K"/AU
L33       0 SEA ABB=ON  PLU=ON  "MORII K"/AU
TOTAL FOR ALL FILES
L34      122 SEA ABB=ON  PLU=ON  "MORII K"/AU
L35       50 SEA ABB=ON  PLU=ON  ("MORII KATSUYUKI"/AU OR "MORII KATUYUKI"/A
U)
L36       0 SEA ABB=ON  PLU=ON  ("MORII KATSUYUKI"/AU OR "MORII KATUYUKI"/A
U)
L37      27 SEA ABB=ON  PLU=ON  ("MORII KATSUYUKI"/AU OR "MORII KATUYUKI"/A
U)
L38       9 SEA ABB=ON  PLU=ON  ("MORII KATSUYUKI"/AU OR "MORII KATUYUKI"/A
U)
TOTAL FOR ALL FILES
L39      86 SEA ABB=ON  PLU=ON  ("MORII KATSUYUKI"/AU OR "MORII KATUYUKI"/A
U)
L40      442 SEA ABB=ON  PLU=ON  L10 OR L20 OR L30
L41      377 SEA ABB=ON  PLU=ON  L11 OR L21 OR L31
L42       0 SEA ABB=ON  PLU=ON  L12 OR L22 OR L32
L43       0 SEA ABB=ON  PLU=ON  L13 OR L23 OR L33
TOTAL FOR ALL FILES
L44      819 SEA ABB=ON  PLU=ON  L14 OR L24 OR L34
L45      818 DUP REM L44 (1 DUPLICATE REMOVED)
L46      442 SEA L45
L47       1 SEA ABB=ON  PLU=ON  L46 AND ?FURAN?
L48      376 SEA L45
L49       3 SEA ABB=ON  PLU=ON  L48 AND ?FURAN?
L50       0 SEA L45
L51       0 SEA ABB=ON  PLU=ON  L50 AND ?FURAN?
L52       0 SEA L45
L53       0 SEA ABB=ON  PLU=ON  L52 AND ?FURAN?
```

TOTAL FOR ALL FILES

L54 4 SEA ABB=ON PLU=ON L45 AND ?FURAN?  
D 1-4 ALL RN

L55 442 SEA L45

L56 9 SEA ABB=ON PLU=ON L55 AND ?LUMINES?

L57 376 SEA L45

L58 36 SEA ABB=ON PLU=ON L57 AND ?LUMINES?

L59 0 SEA L45

L60 0 SEA ABB=ON PLU=ON L59 AND ?LUMINES?

L61 0 SEA L45

L62 0 SEA ABB=ON PLU=ON L61 AND ?LUMINES?

TOTAL FOR ALL FILES

L63 45 SEA ABB=ON PLU=ON L45 AND ?LUMINES?

L64 9 SEA ABB=ON PLU=ON L56 NOT L47

L65 33 SEA ABB=ON PLU=ON L58 NOT L49

L66 0 SEA ABB=ON PLU=ON L60 NOT L51

L67 0 SEA ABB=ON PLU=ON L62 NOT L53

TOTAL FOR ALL FILES

L68 42 SEA ABB=ON PLU=ON L63 NOT L54  
D 1-42 ALL RN

L69 102 SEA ABB=ON PLU=ON L15 OR L25 OR L35

L70 0 SEA ABB=ON PLU=ON L16 OR L26 OR L36

L71 65 SEA ABB=ON PLU=ON L17 OR L27 OR L37

L72 15 SEA ABB=ON PLU=ON L18 OR L28 OR L38

TOTAL FOR ALL FILES

L73 182 SEA ABB=ON PLU=ON L19 OR L29 OR L39

L74 158 DUP REM L73 (24 DUPLICATES REMOVED)

L75 102 SEA L74

L76 2 SEA ABB=ON PLU=ON L75 AND ?FURAN?

L77 0 SEA L74

L78 0 SEA ABB=ON PLU=ON L77 AND ?FURAN?

L79 56 SEA L74

L80 19 SEA ABB=ON PLU=ON L79 AND ?FURAN?

L81 0 SEA L74

L82 0 SEA ABB=ON PLU=ON L81 AND ?FURAN?

TOTAL FOR ALL FILES

L83 21 SEA ABB=ON PLU=ON L74 AND ?FURAN?

L84 21 FOCUS L83 1-  
D 1-21 BIB AB

L85 102 SEA L74

L86 43 SEA ABB=ON PLU=ON L85 AND ?LUMINES?

L87 0 SEA L74

L88 0 SEA ABB=ON PLU=ON L87 AND ?LUMINES?

L89 56 SEA L74

L90 34 SEA ABB=ON PLU=ON L89 AND ?LUMINES?

L91 0 SEA L74

L92 0 SEA ABB=ON PLU=ON L91 AND ?LUMINES?

TOTAL FOR ALL FILES

L93 77 SEA ABB=ON PLU=ON L74 AND ?LUMINES?

L94 41 SEA ABB=ON PLU=ON L86 NOT L76

L95 0 SEA ABB=ON PLU=ON L88 NOT L78

L96 19 SEA ABB=ON PLU=ON L90 NOT L80

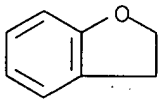
L97 0 SEA ABB=ON PLU=ON L92 NOT L82

TOTAL FOR ALL FILES

L98 60 SEA ABB=ON PLU=ON L93 NOT L83  
D 1-60 BIB AB

=>

L101 ANSWER 1 OF 1 REGISTRY COPYRIGHT 2005 ACS on STN  
RN 496-16-2 REGISTRY  
ED Entered STN: 16 Nov 1984  
CN Benzofuran, 2,3-dihydro- (6CI, 7CI, 8CI, 9CI) (CA INDEX NAME)  
OTHER CA INDEX NAMES:  
CN Benzofuran, 1,2-dihydro- (3CI)  
OTHER NAMES:  
CN **2,3-Dihydrobenzofuran**  
CN 2,3-Dihydrobenzo[b]furan  
CN Benzodihydrofuran  
CN Coumaran  
CN Dihydrobenzofuran  
CN Kumaran  
FS 3D CONCORD  
MF C8 H8 O  
CI COM  
LC STN Files: AGRICOLA, ANABSTR, AQUIRE, BEILSTEIN\*, BIOBUSINESS, BIOSIS,  
CA, CAOLD, CAPLUS, CASREACT, CEN, CHEMCATS, CHEMINFORMRX, CHEMLIST, CIN,  
CSCHEM, DETHERM\*, GMELIN\*, HODOC\*, IFICDB, IFIPAT, IFIUDB, MEDLINE,  
MRCK\*, NAPRALERT, NIOSHTIC, PIRA, PROMT, SPECINFO, SYNTHLINE, TOXCENTER,  
USPAT2, USPATFULL  
(\*File contains numerically searchable property data)  
Other Sources: EINECS\*\*, NDSL\*\*, TSCA\*\*  
(\*\*Enter CHEMLIST File for up-to-date regulatory information)



\*\*PROPERTY DATA AVAILABLE IN THE 'PROP' FORMAT\*\*

640 REFERENCES IN FILE CA (1907 TO DATE)  
24 REFERENCES TO NON-SPECIFIC DERIVATIVES IN FILE CA  
642 REFERENCES IN FILE CAPLUS (1907 TO DATE)  
12 REFERENCES IN FILE CAOLD (PRIOR TO 1967)

=>

FILE 'REGISTRY' ENTERED AT 17:54:31 ON 07 JUN 2005

E "2,3-DIHYDROBENZOFURAN"/CN  
L101 1 SEA ABB=ON PLU=ON "2,3-DIHYDROBENZOFURAN"/CN  
D

FILE 'CAPLUS' ENTERED AT 17:56:33 ON 07 JUN 2005

L102 642 SEA ABB=ON PLU=ON L101  
L103 2 SEA ABB=ON PLU=ON L102 AND (INKJET? OR INK-JET? OR (INK  
JET?))  
D 1-2 ALL RN  
L104 4 SEA ABB=ON PLU=ON L102 AND ?LUMINES?  
L105 2 SEA ABB=ON PLU=ON L104 NOT L103  
D 1-2 ALL RN

FILE 'USPATFULL, USPAT2' ENTERED AT 18:00:30 ON 07 JUN 2005

L106 2 SEA ABB=ON PLU=ON L102 AND (INKJET? OR INK-JET? OR (INK  
JET?))  
L107 1 SEA ABB=ON PLU=ON L102 AND (INKJET? OR INK-JET? OR (INK  
JET?))

TOTAL FOR ALL FILES

L108 3 SEA ABB=ON PLU=ON L103  
D 1-3 BIB AB  
L109 9 SEA ABB=ON PLU=ON L102 AND ?LUMINES?  
L110 2 SEA ABB=ON PLU=ON L102 AND ?LUMINES?

TOTAL FOR ALL FILES

L111 11 SEA ABB=ON PLU=ON L104  
L112 7 SEA ABB=ON PLU=ON L109 NOT L106  
L113 1 SEA ABB=ON PLU=ON L110 NOT L107

TOTAL FOR ALL FILES

L114 8 SEA ABB=ON PLU=ON L111 NOT L108  
D 1-8 BIB AB IND RN

=>